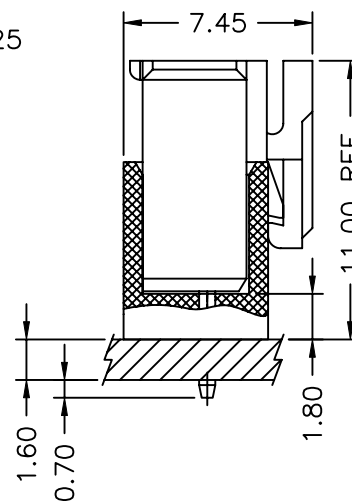
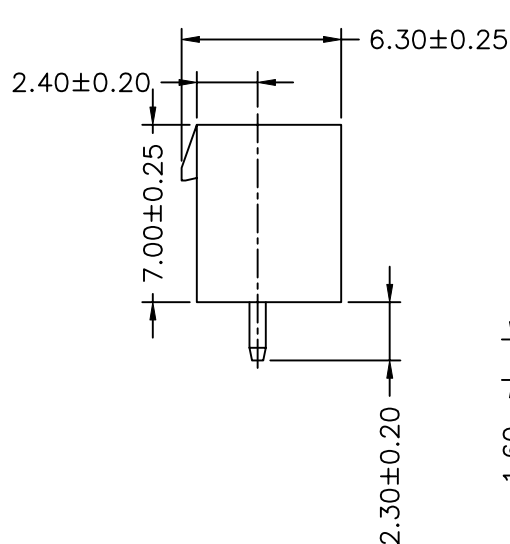
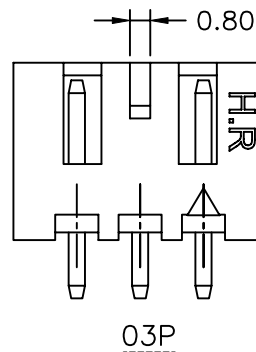
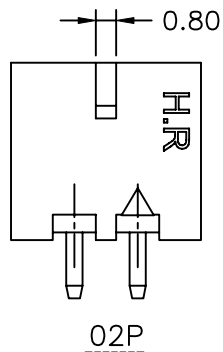


P.C.B LAYOUT



P/N LEGEND

| <u>A2501</u> | <u>WVB-XP</u> | <u>N</u> | <u>X</u> | <u>W</u> | <u>T1</u> | <u>N</u> | <u>XX</u> | <u>G</u> | |
|--------------|--|-------------------|------------------|--------------------------------------|------------------|--|-------------------------------|--|-----------------------|
| ① | ② | ③ | ④ | ⑤ | ⑥ | ⑦ | ⑧ | ⑨ | ⑩ |
| ① Series No. | ② Connector type: WVB=Verticale B type | ③ No. of circuits | ④ N=Halogen Free | ⑤ Material: 0=Nylon 66+15%GF,UL94V-0 | ⑥ Color: W=White | ⑦ Plating code for contacts: T1=Tin-plated | ⑧ Plating code: N=Non-plating | ⑨ Option code: Y1=The pin length is 2.30mm | ⑩ Packing code: G=Bag |

SPECIFICATIONS

Current Rating: 3A AC,DC
Voltage Rating: 250V AC,DC
Temperature Range: -25°C ~ +85°C
Contact Resistance: 10mΩ Max
Insulation Resistance: 1000MΩ Min
Withstanding Voltage: 1000V AC/minute
Pin Material: Brass

| Circuit No. | Dimensions | | Circuit No. | Dimensions | |
|-------------|------------|-------|-------------|------------|-------|
| | A | B | | A | B |
| 02P | 2.50 | 7.50 | 11P | 25.00 | 30.00 |
| 03P | 5.00 | 10.00 | 12P | 27.50 | 32.50 |
| 04P | 7.50 | 12.50 | 13P | 30.00 | 35.00 |
| 05P | 10.00 | 15.00 | 14P | 32.50 | 37.50 |
| 06P | 12.50 | 17.50 | 15P | 35.00 | 40.00 |
| 07P | 15.00 | 20.00 | | | |
| 08P | 17.50 | 22.50 | | | |
| 09P | 20.00 | 25.00 | | | |
| 10P | 22.50 | 27.50 | | | |



燦達電子工業股份有限公司
JOINT TECH ELECTRONIC IND. CO., LTD.

UNIT SCALE SHEET
mm 1 : 1 1 of 1

DRAWN BY 郭木思
2016.01.22
APPROVED BY 陳彥兆
2016.01.22

GENERAL TOLERANCE

X. X±0.25
X. XX±0.15
X. XXX±0.05

TITLE:

2.50mm PITCH
180° WAFER

DRAW NO.: A2501WVB-XPXXXXXX1X

REV. A0